



GAT MONTHLY MEMBERSHIP PROGRESS REPORT

Results as of: 5/31/2024

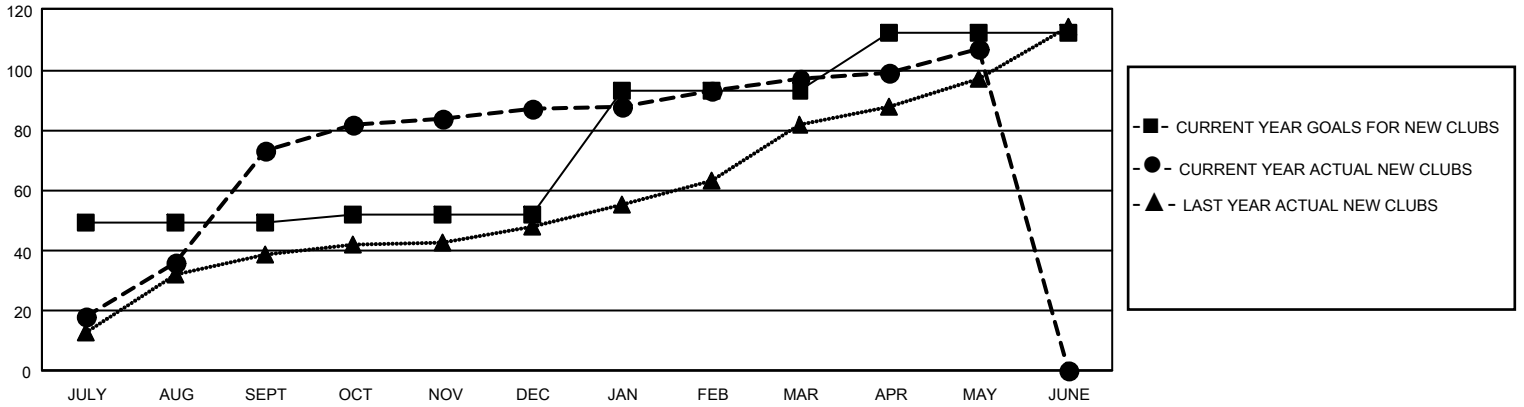
GMT Constitutional Area 6 - I, Group J

REPORT DOES NOT INCLUDE CLUBS IN UNDISTRICTED AREAS.

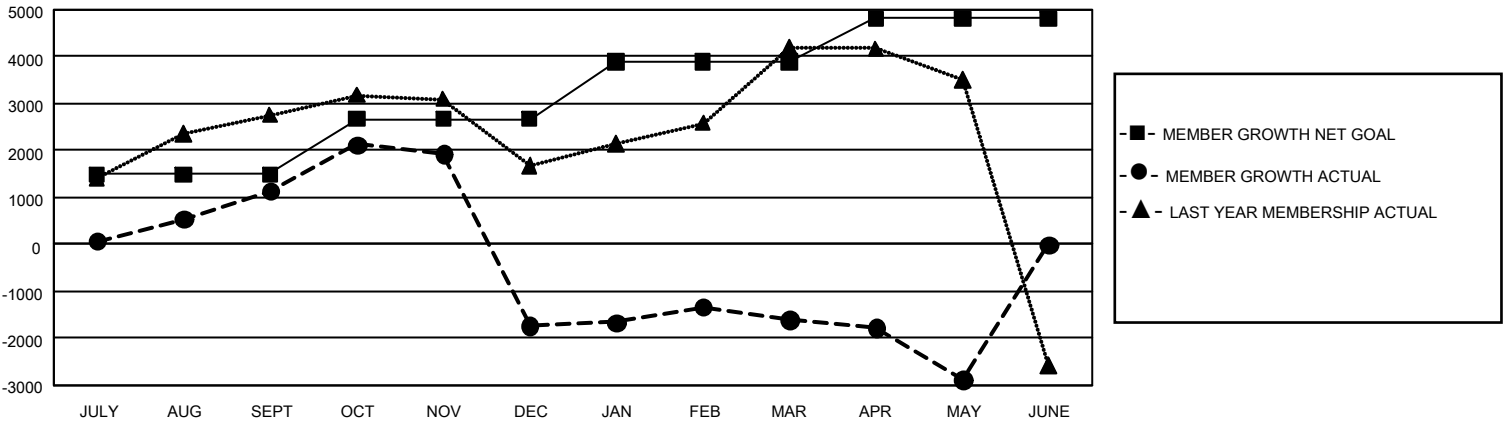
Clubs			
RESULTS FOR 2023-2024			
QUARTER	NEW CLUB GOAL	NEW CLUBS	DROPPED CLUBS
JULY/AUG/SEPT	147	73	46
OCT/NOV/DEC	9	14	73
JAN/FEB/MAR	123	10	17
APR/MAY/JUNE	57	10	5

Members			
RESULTS FOR 2023-2024			
QUARTER	MEMBER GROWTH NET GOAL	MEMBER GROWTH ACTUAL	DROPPED MEMBERS ACTUAL (including transfers)
JULY/AUG/SEPT	1485	5,463	3,830
OCT/NOV/DEC	1190	3,151	4,913
JAN/FEB/MAR	1214	1,744	1,254
APR/MAY/JUNE	926	882	1,925

GOALS AND ACTUAL NEW CLUBS CUMULATIVE



GOALS AND ACTUAL MEMBERS CUMULATIVE



DROPPED CLUBS: 141	1,245 CLUBS OF 1,867 ADDED 1 OR MORE NEW MEMBERS	GENDER DISTRIBUTION	
		MALE 50,361 (80.18%) FEMALE 12,443 (19.81%) NON BINARY 1 (0.00%) PREFER NOT TO ANSWER 8 (0.01%)	
DROPPED MEMBERS		CLICK HERE FOR CUMULATIVE MEMBERSHIP DATA	TOTAL FAMILY UNIT MEMBERS 18,534
DECEASED 259 CLUB CANCELLED 3,473 OTHER 8,157 TOTAL 11,889			FAMILY MEMBERS PAYING HALF DUES 11,199